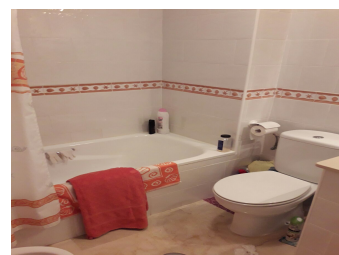
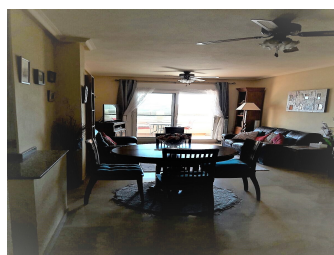


South-Facing Spacious Luxury 2 Bed 2 Bath Apartment close to



If you are looking for a Spacious, Luxury-Build apartment with 2 bedrooms and 2 bathrooms within this Very desirable Residential Development then this property Must be on your viewing list. Located on the First Floor and also with Lift Access, this lovely apartment benefits from the South Facing aspect which is great of course for Winter sun! The "Jumilla" development, constructed 2002-2003, was built to a very high standard and this is further indicated by the Marble Flooring throughout the property's generous 85m2 ... [ask for more details!] **(This Apartment is a 85² build on a 85² plot.)**



2



2



Communal

€110,000