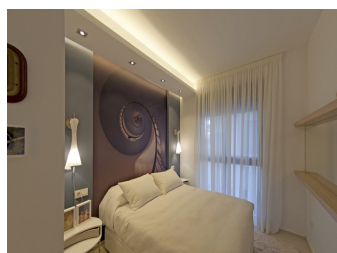


Garden Apartment



Ground floor corner garden apartments located in the sought after area of Dona Pepa. These properties boasts 2 bedrooms, 2 bathrooms, open plan living/dining area, kitchen, terrace and private garden. These properties comes with use of 4 communal pool, communal gym, storage and gated parking.

- Gardens area from 45sqm-108sqm
- Prices are from
- Only 3 Left

This properties have been finished off to a high standard! Doña Pepa is a rather prestigious area on the Costa Blanca South which is only ... [ask for more details!] (This Apartment is 80 sqm.)

2 Communal €159,000